

V-2A/B
COALESCER FILTERS

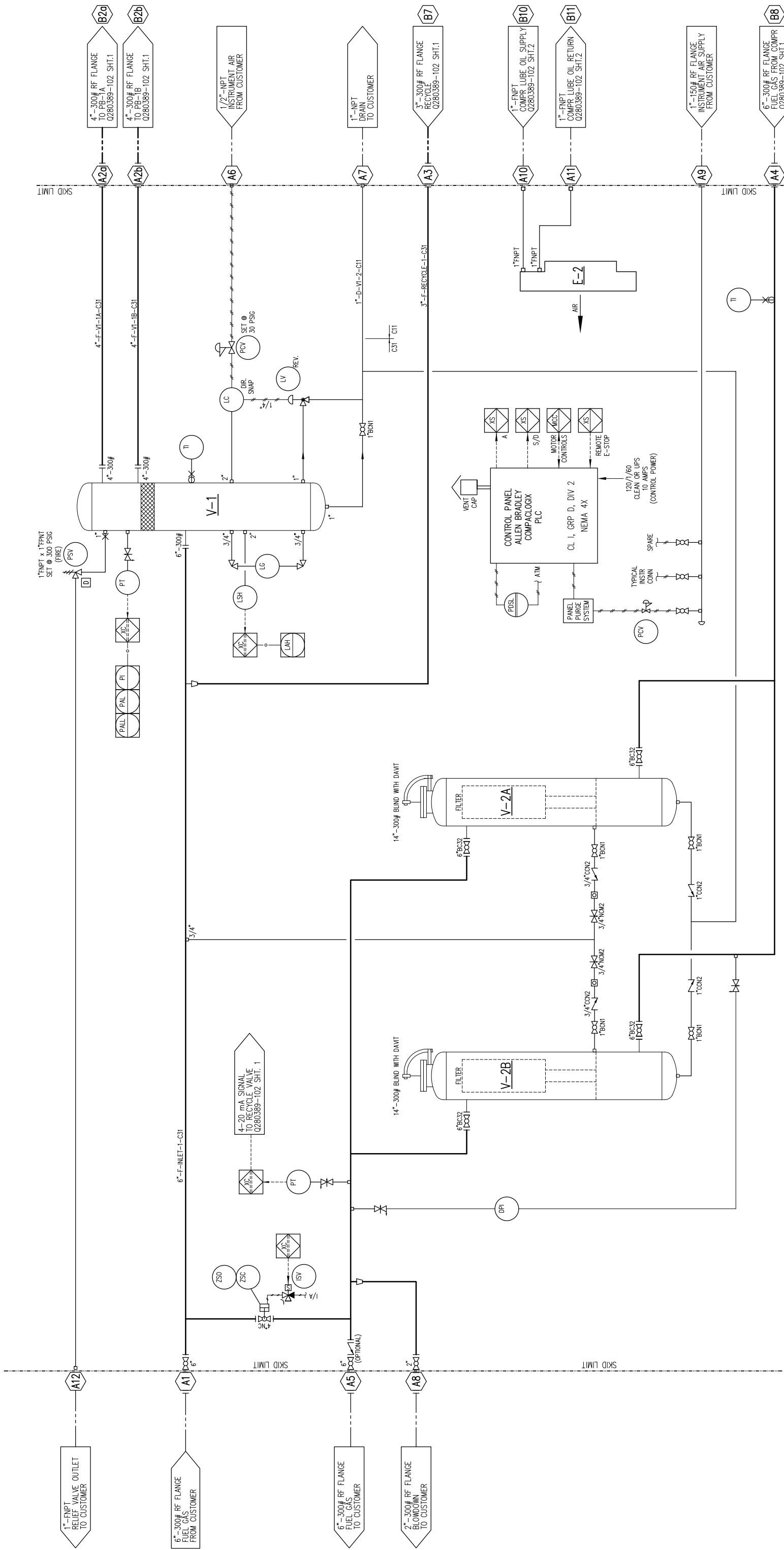
SIZE: 24" OD X 84" S/F
MAWP: 550 PSIG @ 200°F
MDMT: -20°F @ 550 PSIG
CA: 1/16"
MAT'L: CARBON STEEL
WEIGHT: 2600 LBS.
CAPACITY: 100%

SUCTION SCRUBBER
V-1

SIZE: 30" OD X 84" S/S
MAWP: 300 PSIG @ 200°F
MDMT: -20°F @ 300 PSIG
CA: 1/16"
MATERIAL: CARBON STEEL
ELEMENTS: DEMISTER PAD
WEIGHT: 2100 LBS.
CAPACITY: 100%

E-2
LUBE OIL COOLER

MFG: (TBD)
 TYPE: FORCED DRAFT
 SIZE:
 AREA: _____ FT²
 DUTY: _____ BTU/HR
 MAWP: NA
 MDMT: NA
 CA: _____"
 MATERIAL:
 WEIGHT:




FOR
BID PURPOSES
ONLY
NAME J. Daugherty DATE 2/6/09

| REV | DESCRIPTION | DATE | BY | APR |
|-----|-------------|------|----|-----|
|-----|-------------|------|----|-----|

| | |
|----------------------------------|----------------|
| DRAWN BY <i>J. Dougherty</i> | DATE 2/5/09 |
| CHECKED BY | SCALE NONE |
| APPROVED BY <i>J. Johnson</i> | WO NO |
| CUST PO | |

PRATT & WHITNEY
TECNICA WALSI
OFICINA
LA RANA PROJECT

| | | | | |
|---|------------------------------------|------------|--|--|
|  | 10815 TELGE ROAD HOUSTON, TEXAS | | TITLE P & I DIAGRAM FUEL GAS VESSEL SKID | |
| | DWG NO Q280389-101 | SHT 1 OF 1 | REV 0 | |

PB-1A/B
 SUCTION BOTTLES

MFG: TBD
 SIZE: 12.75" OD X 36" S/S
 MAMP: 300 PSIG @ -20/350F
 MDMT: -20F @ 300 PSIG
 CA: 1/16"
 MATL: CARBON STEEL
 WEIGHT: 403 LBS. EACH

PB-2A/B
 DISCHARGE BOTTLES

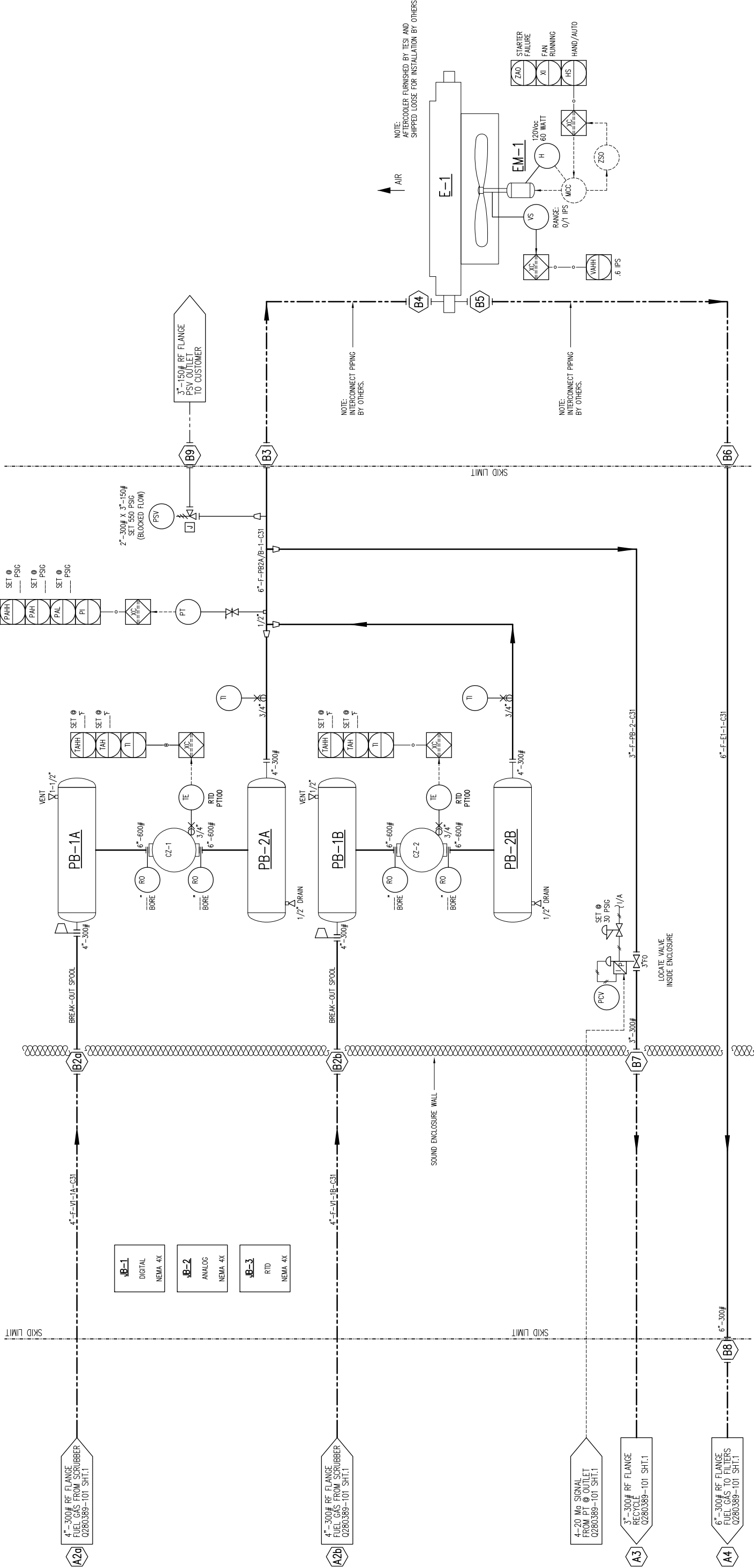
MFG: TBD
 SIZE: 12.75" OD X 54" S/S
 MAMP: 550 PSIG @ -20/350F
 MDMT: -20F @ 550 PSIG
 CA: 1/16"
 MATL: CARBON STEEL
 WEIGHT: 501 LBS. EACH

E-1
 GAS AFTERCOOLER

MFG: TBD
 TYPE: _ PASS X _ ROW
 SIZE: _ TUBES X 0 _" OD X 16 BWG X _' TL
 AREA: _ FT2 BARE _ FT2 EXTENDED
 DUTY: _ BTU/HR
 MAMP: 550 PSIG @ 350F
 MDMT: -20F @ 550 PSIG
 CA: 1/16"
 MATL: SA-214 WELDED TUBES, SA-516-70 BOXES
 WEIGHT: INCLUDED WITH AC FRAME

EM-1
 AIR COOLER MOTOR

MFG: TBD
 FRAME: _ TEFC
 POWER: _ HP @ _ RPM
 VOLTAGE: 460Vdc/3Ph/60Hz
 SERVICE FACTOR: 1.15
 INSULATION/RISE: CLASS "F"/CLASS "B"
 FULL LOAD CURRENT: (TBD) AMPS
 LOCKED ROTOR CURRENT: (TBD) AMPS
 WEIGHT: (TBD) LBS EACH



FOR
BID PURPOSES
 ONLY
 NAME J. Daugherty DATE 2/6/09

| | | |
|--------------|--------|-----------------|
| DRAWN BY | DATE | FOR |
| J. Daugherty | 2/5/09 | PRATT & WHITNEY |
| CHECKED BY | SCALE | TECNICA WALSI |
| APPROVED BY | WO NO | OFICINA |
| J. Johnson | | LA RANA PROJECT |
| CUST PO | | |

| | | |
|-----------------------------|------------------------------------|-----------------------------|
| TOROMONT PROCESS SYSTEMS | TITLE | P & I DIAGRAM |
| | 10815 TELGE ROAD HOUSTON, TEXAS | FUEL GAS COMPRESSOR SKID |
| DWG NO | Q280389-102 | SHT 1 OF 2 |
| | | REV 0 |

P-1302
COMP. PRE-LUBE PUMP

MFG: WING
MODEL: FH456
POWER: TBD
MAX FLOW: 3 GPM
MATERIAL: CAST IRON
WEIGHT: 25 LBS

PM-1302
COMP. PRE-LUBE OIL PUMP MOTOR

MFG: BALDOR
FRAME: 56C
POWER: 0.5 HP @ 1750 RPM
VOLTAGE: 120V/1Ø/60Hz
SERVICE FACTOR: 1.15
INSULATION RISE: CLASS F
WEIGHT: 65 LBS

F-1301
LUBE OIL FILTER

FILTER: SIMPLEX FILTER PROVIDED BY AREL
FILTRATION: LESS THAN 5 MICRONS
(DUPEX FILTER PROVIDED AS OPTION)

P-1301
COMP. OIL PUMP

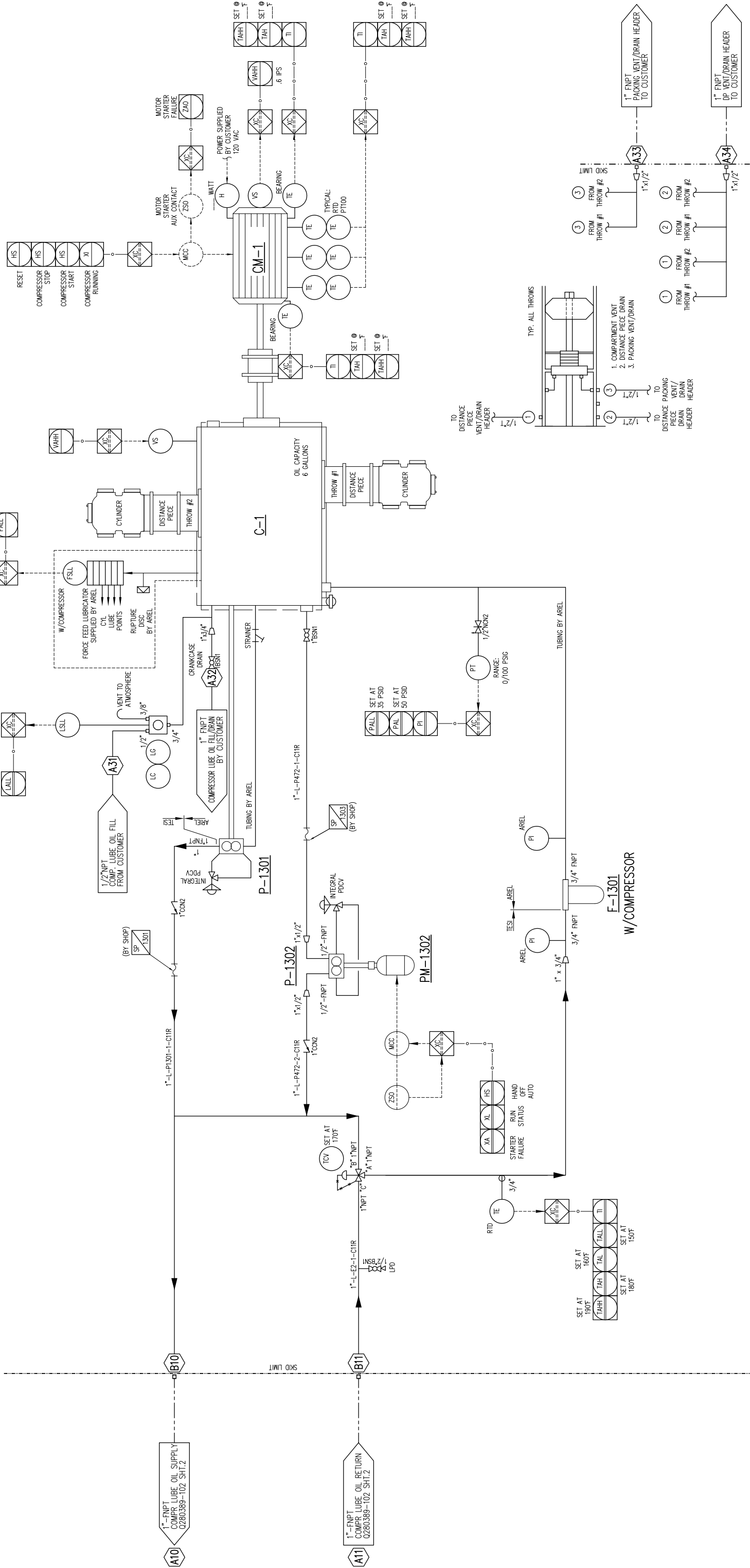
MFG: AREL
SHAFT DRIVEN

C-1
RECIPROCATING GAS COMPRESSOR FRAME

MFG: AREL
MODEL: JGH/2
STROKE: 4.50"
MAX. SPEED: 1200 RPM
ACTUAL SPEED: 1185 RPM
WEIGHT: 9400 LBS.

CM-1
COMPRESSOR MOTOR

MFG: TBD
FRAME: 100
POWER: 700 HP @ 1185RPM
VOLTAGE: 460V/3Ø/60Hz
SERVICE FACTOR: 1.15
INSULATION/RISE: F/B CLASS
FULL LOAD PF: _____ (CALCULATED)
FULL LOAD EFF: _____ (CALCULATED)
LOAD CURRENT: _____ AMPS
LOCKED ROTOR CURRENT: _____ AMPS
STALL TIME: _____ SEC.
WEIGHT: _____ LBS
ENCLOSURE: WP II



FOR
BID PURPOSES
ONLY
NAME P. Daugherty DATE 2/6/09

| | | |
|---------------------|---------------|-----|
| DRAWN BY | DATE | FOR |
| <u>P. Daugherty</u> | <u>2/5/09</u> | |
| CHECKED BY | SCALE | |
| | <u>NONE</u> | |
| APPROVED BY | WO NO | |
| <u>P. Johnson</u> | | |
| CUST PO | | |

PRAATT & WHITNEY
TECNICA WALSI
OFICINA
LA RANA PROJECT



TITLE
10815 TELGE ROAD
HOUSTON, TEXAS

| | | |
|--------------------|---------------|----------|
| DWG NO | SHT | REV |
| <u>Q280389-102</u> | <u>2 OF 2</u> | <u>0</u> |

[illegible]